

Date: \_\_\_\_\_

Marks: \_\_\_\_\_

# 4

## Robots In The Classroom

### Imperatives

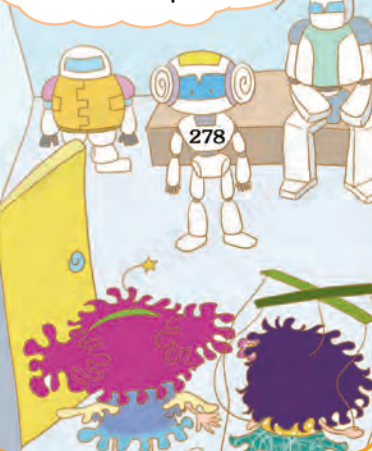
Please **come in!**  
Welcome to the  
Robot Room!



**Meet** our new  
robots! They listen to  
your orders.



It is your turn  
now. **Greet**  
Lola and Pipi!



### Grammar in Focus

We use imperatives to give orders.

<b>Come in,</b>	please.	<b>Sit down,</b>	please.
<b>Keep quiet,</b>		<b>Stand up,</b>	
<b>Open / Close</b>	the books,	please.	
<b>Take out / Put away</b>			

We use 'do not (don't)' to tell people not to do something.

<b>Do not (Don't) talk,</b>	please.
-----------------------------	---------



✓ Do not run, please.    ✗ Not run, please.

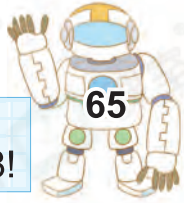
- ( **A** Not / **B** Do not ) talk in class, please.
- ( **A** Don't / **B** Not ) watch TV all day!

**A. Look at the orders. Match the robots to the correct pictures.**



1.

Open the window, 28!



2.

Give me the chair, 65!



3.

Close the door, 414!



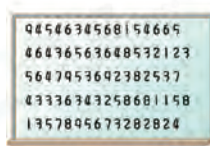
4.

Clean the board, 711!

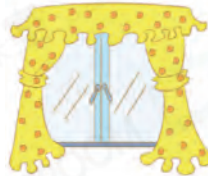
a)



b)



c)



d)

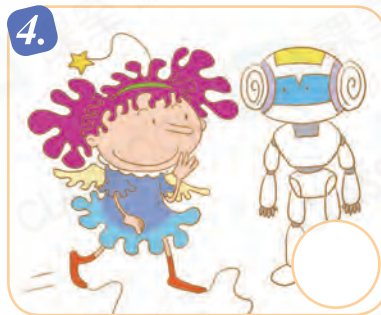
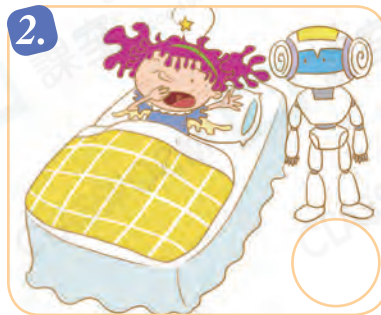


**B. Lola is telling the robots what to do and what not to do. Circle the correct answers.**

1. Don't run / is run in the corridor.
2. Do not look / are look out of the window during lessons.
3. Don't talk / not talk when you are eating.
4. Keep / Is keep quiet in the classroom, please.
5. Put / Open the toy cars back in the box.
6. Please sit / not sit on the chair. Don't sit on the floor.
7. Don't do / is do the homework for your classmates.
8. Stop / Is stop eating, please. The recess is over.
9. Listen / Have listen to your teacher in class, please.
10. Sleep / Am sleep early at night. Get up early in the morning.
- ★ 11. Be nice / Is nice to your friends and parents.



**C.** Lola is showing a robot what to do. Match the imperatives to the correct pictures.



A) Sit down, please.

B) Come here, please.

C) Wake up, please.

D) Open the box, please.

**D.** Robot 001 is giving the new robots different orders. Fill in the blanks with the given words.



1. \_\_\_\_\_ to everyone you meet.

2. \_\_\_\_\_ the flowers in the garden.

3. \_\_\_\_\_ on the floor at night.

4. \_\_\_\_\_ when I call your name.

5. \_\_\_\_\_ at me when I am talking.

6. \_\_\_\_\_ to me, 887!



**E.** Robot 001 is telling the new robots not to follow what Pipi does. Complete the signs with the help of the given words.

Don't    talk    stand    sit    draw    eat    read    walk

✗



e.g. Don't stand  
on the table.

✗



1 \_\_\_\_\_  
books.

✗



2 \_\_\_\_\_  
to your shoes.

✗



3 \_\_\_\_\_  
on your hands.

✗



4 \_\_\_\_\_  
on other robots.

✗



5 \_\_\_\_\_  
on your face.

**Be good and follow rules.**