



Watch it in motion!

Date:

Marks:

# 7

## Where Do You Live?

Questions – Where / How



### Grammar in Focus

We use 'Where' to ask about places.

<b>Where</b>	do you live?	I live	<b>in</b>	Central.
--------------	--------------	--------	-----------	----------

We can use 'How' to ask about ways of going to a place.

<b>How</b>	do you go to school?
I go to school	<b>by</b> minibus.



Mistakes Corner

✓ **How** do you go to the library?

✗ **Where** do you go to the library?

- ( **A** Where / **B** How ) do you live? I live in Yuen Long.
- ( **A** Where / **B** How ) do you go to the market?

**A.** Mrs Whale is asking Alex a question. Look at the pictures and fill in the blanks with the names of these places.



: **How** do you go to these places?

market

cinema

bank

library

cafe

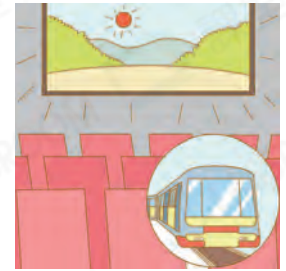


1. I go to the \_\_\_\_\_ by MTR.

2. I go to the \_\_\_\_\_ by minibus.

3. I go to the \_\_\_\_\_ by tram.

4. I go to the \_\_\_\_\_ on foot.



**B.** Mrs Whale is asking Alex some questions. Circle the correct answers.

1. Where / How do you live?

2. Where / How do you go to school?

3. Where / How do you go to the market?

4. Where / How do you swim?

5. Where / How do you like to go?

6. Where / How do you go to the library?

7. Where / How does your best friend live?

8. Where / How does your mum go to work?

I live in North Point.

I walk to school.

I go there on foot.

I swim at the beach.

I like to go to the mall.

I go there by tram.

She lives in Central.

She goes to work by

MTR.

**C. Alex is talking to his friends. Match the answers to the questions and write the correct letters in the brackets.**

1. Where is the toilet? (     )    *A)* I live in Wan Chai.
2. How do you go to Central? (     )    *B)* I go to the park by bus.
3. How do you go to school? (     )    *C)* She goes to school by bus.
4. Where do you live? (     )    *D)* They are at home.
5. Where are your parents? (     )    *E)* My school is in Tai Po.
6. How do you go to the park? (     )    *F)* I go to Central by tram.
7. Where is your school? (     )    *G)* I go to school on foot.
8. How does Amy go to school? (     )    *H)* It is on the third floor.

**D. Miss Starfish is talking to Alex. Look at the answers and complete the questions using 'Where'.**

- e.g.* Where do you \_\_\_\_\_ go to school \_\_\_\_\_ ? I go to school in Sha Tin.
1. Where do you \_\_\_\_\_ ? I live in North Point.
  2. Where do you \_\_\_\_\_ ? I go shopping in Mong Kok.
  3. Where \_\_\_\_\_ ? I go swimming in Wan Chai.
  4. \_\_\_\_\_  
\_\_\_\_\_ I go hiking in Sai Kung.
  - ★ 5. \_\_\_\_\_  
\_\_\_\_\_ I have lunch at home.

**E.** Alex is interviewing Fishy from Class 2A. Fill in the blanks with 'How' or 'Where'. Then answer the question.

Hi Fishy! How are you?







1. \_\_\_\_\_ do you live?
2. \_\_\_\_\_ do you go to school?
3. \_\_\_\_\_ is your school?
4. \_\_\_\_\_ do you go after school?
5. \_\_\_\_\_ do you go to the park?
6. \_\_\_\_\_ do you go home?
7. \_\_\_\_\_ are you going now?

Hello. I am fine, thank you.

- I live under a rock.
- I go to school by taxi.
- My school is in a pond.
- I go to the park.
- I go there by bus.
- I go home by minibus.
- I am going to the bus stop.



8. How does Fishy go to school? Tick (✓) the correct box under the chart.

Ways to go to school for Class 2A					
					
By bus	By taxi	By minibus	By ferry	By tram	By train

<input type="checkbox"/>	<input type="checkbox"/>	<input type="checkbox"/>	<input type="checkbox"/>	<input type="checkbox"/>	<input type="checkbox"/>
--------------------------	--------------------------	--------------------------	--------------------------	--------------------------	--------------------------

**Walking is good for your health. Walk more!**