



## Big Redwood



### Redwood National and State Parks

#### What is the world's tallest tree?

- ◆ The world's tallest tree is Hyperion in the Redwood National and State Parks.
- ◆ People found Hyperion in September 2006. It was 115.5 m tall at that time.

#### How do redwood trees grow so tall but not fall down?

Tall trees can fall when they face strong wind and heavy rain.

However, the redwood trees can support themselves with their very strong trunks and roots.

#### Come to the park and enjoy these fun activities:

- ◆ Have a walk under the trunks of huge redwoods.
- ◆ Stay in the comfortable redwood houses with your family or friends.
- ◆ Have a picnic and camp alongside the rivers, or the famous Big Lagoon.

### Write the correct letters in the boxes for Question 1 and 2.

1. The leaflet aims to \_\_\_\_\_.  
 A. talk about Hyperion  
 B. introduce a park  
 C. teach people about trees  
 D. talk about Big Lagoon

2. Which activity is NOT mentioned in the leaflet?  
 A. staying in a tree house  
 B. walking in the woods  
 C. setting up a tent  
 D. swimming

### Answer Question 3 in short.

3. What makes redwood trees stand still in bad weather?

---



---

### Fill in the blanks with the words from the text.



4. Strong \_\_\_\_\_ and heavy \_\_\_\_\_ can make trees fall.



## Exploring the Jungle

Want to fly like a bird?  
A new zip line is now in the Yellow Jungle!



### Yellow Jungle:

- ◆ Home to insects, animals and birds you can't find anywhere else in the world
- ◆ Rivers flowing down high hills and through valleys

### Yellow Zip Line:

- ◆ The world's longest zip line
- ◆ Safe, comfortable, quiet and smooth
- ◆ Take you through the treetops where monkeys play

An Amazing  
Adventure in the  
Nature!

Fee: \$200 / adult      \$150 / child

\* Children under the age of 7 cannot join the zip-line tour

Call Mr Miller on 2389 0235 to book your tour now!

### Write the correct letters in the boxes for Question 1 and 2.

- Yellow Zip Line is the \_\_\_\_\_? zip line in the world.
  - most comfortable
  - safest
  - longest
  - quietest
- Which of the following is NOT true about the zip-line tour?
  - An adult has to pay more than a child to join it.
  - Tourists can call to book it.
  - A child above 12 can join it.
  - Only adults are welcomed.

### Fill in the blanks with the words from the text.

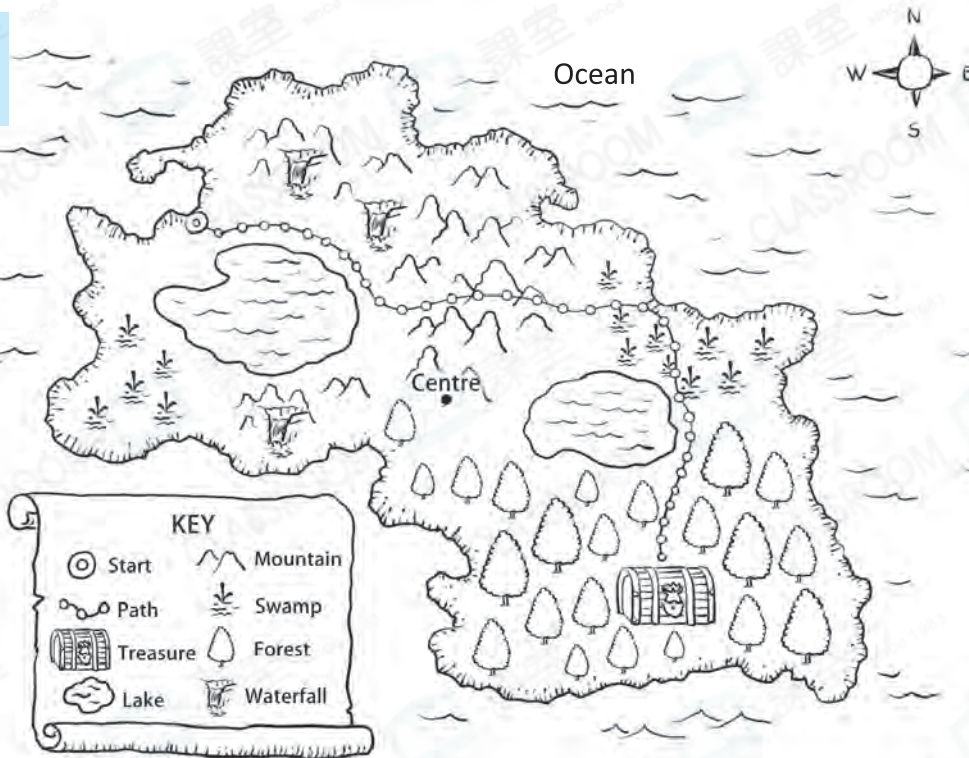


- Which three natural features can we see in the Yellow Jungle?  
Rivers, \_\_\_\_\_ and \_\_\_\_\_

### Answer Question 4 in short.

- How much does a family of three (two parents and a 7-year-old child) need to pay for the tour?  
\_\_\_\_\_

Wonder Island



**KEY**

	Start		Mountain
	Path		Swamp
	Treasure		Forest
	Lake		Waterfall

Write the correct letters in the boxes for Question 1 and 2.

1. How many waterfalls are there on Wonder Island?
- A. one  
B. two  
C. three  
D. four

2. Which of the following can you NOT find on the map?
- A. a river  
B. the ocean  
C. trees  
D. a footpath

Put the letters in the correct order.

3. How can you find the treasure?
- A. Climb up and down the mountains.  
B. Go into the forest.  
C. Walk through the swamp.  
D. Walk along the bigger lake.

 →  →  → 

Complete the table.



4. If you are standing at Centre, what can you see in different directions?

Direction	Natural feature
North (N)	mountain
(i) East (E)	
(ii) South (S)	



## How to Live in a Hot Desert

It is never easy to live in a hot desert. It is burning hot in daytime but freezing cold at night. Also it rarely rains.

Under such poor living conditions, plants find every way to live. They have small leaves or even no leaves so that they lose little water in hot daytime. Plants have special body parts to help them store a lot of water. They also have very long roots to take in the water stored deep in the soil.

The life of human beings in a hot desert is not easy too. They have to learn how to find water, hunt animals and collect plants. Most of them keep animals such as sheep, goats, cows and camels. People can eat their meat or sell them for money. There is little water for plants to grow, but some people can still farm in a hot desert.

### Write the correct letters in the boxes for Question 1 and 2.

- |   |   |
|---|---|
| <p>1. How can plants in a hot desert live?</p> <p>A. grow deep and long roots</p> <p>B. grow large and broad leaves</p> <p>C. grow thick and short roots</p> <p>D. grow a lot of leaves</p> | <p>2. Which human activity is NOT mentioned in the text?</p> <p>A. hunting animals</p> <p>B. farming</p> <p>C. collecting rainwater</p> <p>D. collecting plants</p> |
|---|---|



### Fill in the blanks with the words from the text.



3. How is the weather in a hot desert?
- High temperature in \_\_\_\_\_
  - Low temperature at night
  - Little \_\_\_\_\_

### Answer Question 4 in a complete sentence.

4. Why do people in a hot desert keep animals?

---



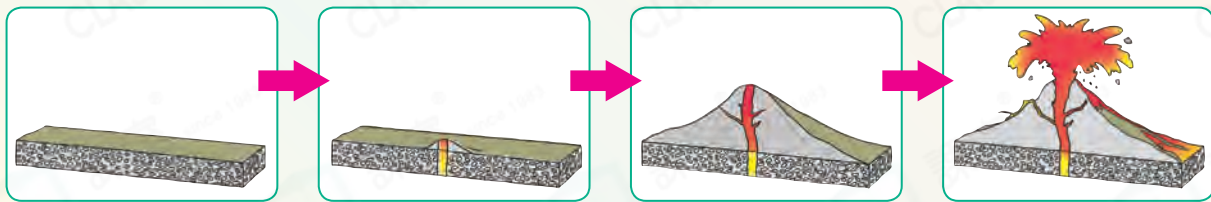
---

## Volcanoes

Volcanoes are one of the world's natural wonders. They are mountains which let hot liquid rock come out of a large opening. Have you ever wondered how a volcano is formed?

Inside the Earth, it is so hot that rocks melt. The melted rock is then turned into a kind of very hot and thick liquid called magma. The liquid moves around inside the Earth. Magma comes out to the ground through the cracks. It becomes lava once it meets the air. Lava later cools to form solid rocks. When more and more solid rocks are formed, they become a volcano.

Nature is full of wonders. About volcanoes, there are still a lot to explore.



Put the letters in the correct order.

1. How is a volcano formed?
  - A. Magma becomes lava.
  - B. Magma rises from a crack.
  - C. A volcano is formed.
  - D. Lava cools to form solid rocks.

□ → □ → □ → □

Answer the question in a complete sentence.

2. What is magma?

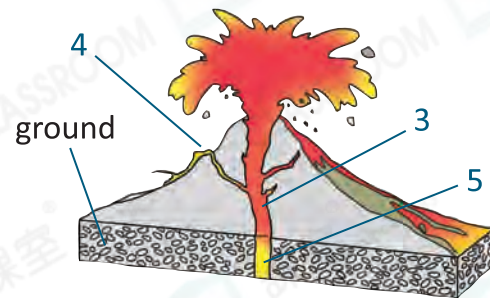
\_\_\_\_\_

\_\_\_\_\_



Fill in the blanks with the given words.

magma lava volcano



3. \_\_\_\_\_

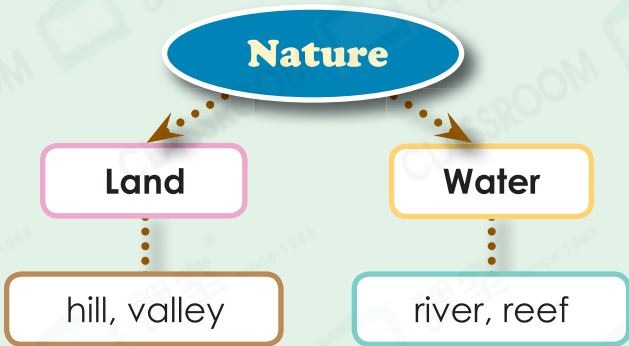
4. \_\_\_\_\_

5. \_\_\_\_\_



# Bank of Vocabulary

## Think Smart



## Word Fun

A. Cross out the words with wrong spelling.

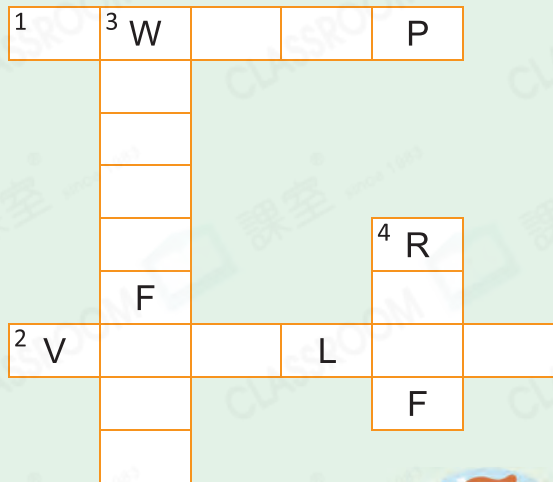
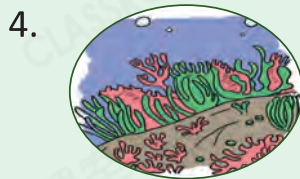
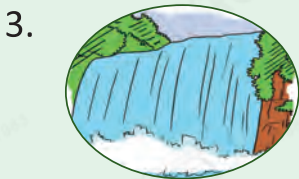
- swamp
- jungel
- ocean
- waterfall

B. Complete the crossword puzzle.

Across



Down



Visit our Online World for more vocabulary.



## Write Smart

C. Fill in the blanks with the words from Word Box.

When my dad was little, he lived in a village on a small 1. \_\_\_\_\_. At the foot of it, there was a big 2. \_\_\_\_\_. He often threw stones into it. There was also a 3. \_\_\_\_\_ near his home. He loved having a picnic under the trees. In the evening, my dad liked looking at the high 4. \_\_\_\_\_ far away. In winter, the top of it would be covered by snow.

**WORD BOX**

- forest
- hill
- lake
- mountain