

Timetable

Joanna is reading the timetable of a day camp.

FUN AUTUMN DAY CAMP

Join us on: 23rd October / 7th November / 14th November

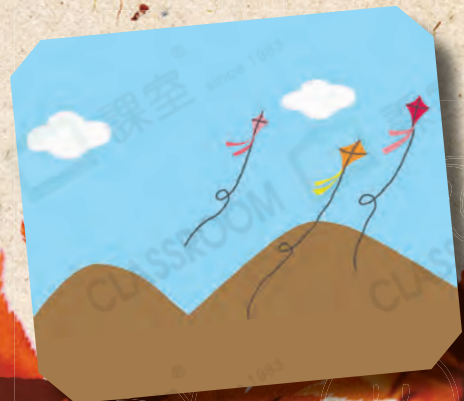
Timetable

For Ages 7-12

- | | |
|----------|--|
| 08:20 am | Gather at Tsuen Wan MTR station (Exit B)
(Please have breakfast before you come.) |
| 09:30 am | Arrive at the campsite |
| 10:00 am | Have a treasure hunt on Pineapple Mountain* |
| 12:30 pm | Have a picnic on the top of the mountain |
| 2:00 pm | Go back to the campsite |
| 2:30 pm | Make 'bottle shoes' # |
| 4:00 pm | Kite Flying Competition* |
| 5:30 pm | Barbecue dinner |
| 7:30 pm | Leave for home |

* You can form groups of three.

Please bring your own plastic bottles.



A Choose the best answers by blackening the circles.

1. Joanna is only free in October. When can she join the day camp?

- A. 7th October B. 23rd October
 C. 7th November D. 14th November

2. How many meals do the children have in the day camp?

- A. One B. Two
 C. Three D. Four

Q2

Pay attention to the words related to having food in the camp.

3. What do the children do on Pineapple Mountain?



A.



B.



C.



D.

4. How long do the children spend on making 'bottle shoes'?

- A. Half an hour B. An hour
 C. One and a half hours D. Two hours

5. Which of the following is TRUE about Fun Autumn Day Camp?

- A. Children can fly the kites in groups.
 B. Children meet at the bus stop in the morning.
 C. Children spend two days at the campsite.
 D. Children can find a lot of treasures in the afternoon.

B Answer the questions in short.

6. Who can join Fun Autumn Day Camp?

_____.

Q6

Answer the question with the words 'years old'.

7. Find a word in the timetable that means 'come and meet'.

_____.