

Unit 21 Conversation



Understanding the speaker's feelings

Pre-listening Task

What are the following injuries? Fill in the blanks with the given words.

Learn these words

bruise

scald

cut

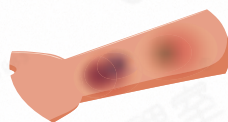
scratch

burn

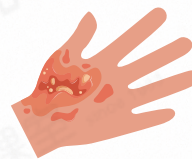
wound



1.



2.



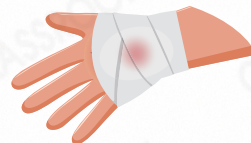
3.



4.



5.



6.

Take a look at the 'Exercise' section. Then read the questions and pay attention to the following information:

7. Who is Matt? _____

8. Matt got hurt when he took care of _____.

9. Make a guess: What is Matt's pet? (Please circle the correct letter.)

A. a fish

B. a cat

C. a hamster

D. a turtle

Exercise



Listen to Track 9



DAILY-LIFE ENGLISH

A **wound (n.) / (v.)** can be any kind of the above injuries.

e.g. The glass **wounded (v.)** him badly. There are **wounds (n.)** in his legs.

Patsy is chatting with her classmate Matt, who got hurt when he took care of his pet. Listen carefully. Choose the best answers for Questions 1-7.

1. Matt was _____ when Lizzy scratched him.

A. taking a nap with Lizzy

B. trimming Lizzy's claws

C. playing with Lizzy

D. feeding Lizzy

2. What did Lizzy scratch and chew on?



A.



B.



C.



D.

3. Why did Lizzy NOT scratch the magazine?

- A. Lizzy didn't have the chance to get it.
- B. Matt has returned it to Sam.
- C. Lizzy doesn't like to scratch books.
- D. Matt asked Lizzy not to scratch it.



4. How did Matt feel when he found that Sam's magazine was not damaged?

- A. proud
- B. shocked
- C. relieved
- D. unfortunate

5. What does Matt NOT do when teaching Lizzy to behave?

- A. speak in a strict voice
- B. clap his hands
- C. give Lizzy a treat
- D. pat Lizzy's head

6. Matt thinks _____ is the best way to stop Lizzy's misbehaviour.

- A. spending more time with Lizzy
- B. giving Lizzy more food
- C. giving Lizzy a chew toy
- D. not letting Lizzy enter his room



Q6: Distinguish Matt's idea.

7. Which of the following is TRUE?

- A. Lizzy does not like to chew toys.
- B. Lizzy knows how to unlock the door of Matt's room.
- C. Lizzy misbehaves because she wants more food.
- D. Lizzy is less likely to misbehave when she feels happy.