

# Unit 9 Conversation



Telling if something is true or not

## Pre-listening Task

Which story genre is your favourite? Draw lines to match the genres to the correct functions.

### Learn these words

1. biography ●
2. comedy ●
3. sci-fi ●
4. fantasy ●
5. horror ●
6. myth & legend ●
7. romance ●

### What do these stories do?

- evoke a feeling of fear
- make people laugh
- tell the life story of a person
- tell a story about mythology
- tell a story about a potential or an imagined future
- tell a story about love
- tell a story about an imaginary world

Take a look at the 'Exercise' section. Then read the questions and pay attention to the following information:

8. Who are talking? Brian and his \_\_\_\_\_.
9. They are going to a \_\_\_\_\_.
10. Make a guess: What may they talk about? (Please circle the correct letters.)  
A. films  
B. food and drinks  
C. traditional customs  
D. actors and actresses

## Exercise



Listen to Track 3



Brian is talking with his friend Lara about going to a film festival. Listen carefully. Choose the best answers for Questions 1-8.

1. The theme of this year's film festival is '\_\_\_\_\_'.  
A. A World of Imagination  
B. Hong Kong Filmmakers  
C. A World of Appreciation  
D. Famous Actors and Actresses



10 mins

DATE

LISTENING

2. Where will the film festival be held?

- A. at the City Hall
- B. at the Hong Kong Convention and Exhibition Centre
- C. at the Asia World Expo
- D. at the Hong Kong Cultural Centre

3. The new venue is chosen because it is \_\_\_\_\_.

- A. large
- B. easy to reach
- C. air-conditioned
- D. large and easy to reach

4. What kind of film is *The Maze*?

- A. myth
- B. comedy
- C. horror
- D. sci-fi

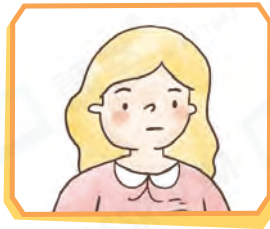
**Tip**

Q5: Pay attention to Lara's tone.

5. How does Lara feel when she talks about *The Maze*?



A.



B.



C.



D.



6. Which of the following is TRUE about the film *Blue Planet*?

- A. It talks about aliens.
- B. It has received many good reviews.
- C. It stars some well-known actors and actresses.
- D. Its director is famous but new to the film industry.

7. Lara \_\_\_\_\_.

- A. prefers comedies to sci-fi
- B. loves films which have won awards
- C. loves the creative storylines in sci-fi
- D. enjoys films with special visual effects

8. When should Brian and Lara arrive at the festival venue?

- A. 11:30 pm
- B. 12:30 pm
- C. 1 pm
- D. 2 pm