

Unit 3 Radio interview



Telling if something is true or not

Pre-listening Task

What are the following electronic devices? Fill in the blanks with the given words.

Learn these words

e-reader

electronic watch

tablet

game console

desktop

laptop



1. _____

2. _____

3. _____



4. _____

5. _____

6. _____

Take a look at the 'Exercise' section. Then read the questions and pay attention to the following information:

7. _____ is the host of a programme on Campus TV.

8. Make a guess: What may Jack and Rick talk about? (Please circle the correct letter.)

A. Jack's inventions

B. Rick's inventions

C. their inventions

Exercise



Listen to Track 1



Jack is interviewing the young inventor Rick Chow for Campus TV. Listen carefully. Choose the best answers for Questions 1-7.

1. What did Rick like to do when he was a child?

A. learn about how some machines work

B. invent big machines

C. give children Science lessons

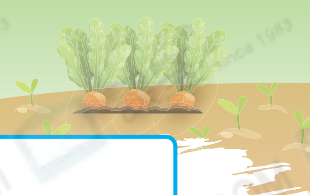
D. read storybooks





10 mins

DATE



LISTENING

2. Why did Rick take part in the Young Inventors Competition?

- A. He wanted to start inventing things.
- B. He wanted to design a solar powered robot.
- C. He hoped the judges of the competition would like his invention.
- D. He was interested in technology and a teacher asked him to join it.

3. Rick was the _____ in the Young Inventor Competition.

- A. champion
- B. first-runner up
- C. second-runner up
- D. judge



4. Which of the following is TRUE about Smart Thermo?

- i. It tells the daily temperature.
 - ii. It controls the temperature of the room.
 - iii. It gives suggestions on what to wear.
 - iv. It can connect to mobile phones.
- A. i and ii
 - B. i, ii and iii
 - C. i, iii and iv
 - D. all of the above

5. Rick feels proud to _____.

- A. be creative
- B. find his passion
- C. be in a team of talented people
- D. have won a local competition when he was young



Tip

Q5: Pay attention to what Rick meant to say.

6. What is the purpose of the school established by Rick?

- A. to create more inventions
- B. to look for and cultivate potential young inventors
- C. to attract more people to study Science
- D. to reward young talents for their inventions

7. Who can apply to the school?

- A. young people who love creating new inventions
- B. experienced young inventors
- C. scientists who are equipped with skills
- D. young inventors who have just graduated from university