



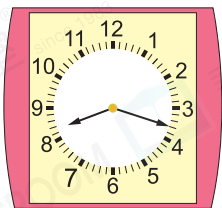
Date: _____

Mark: _____

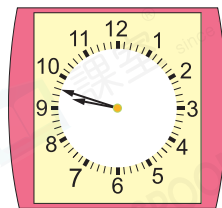


Write the time shown by each clock.

1.



2.



_____ minute(s) to _____

3.



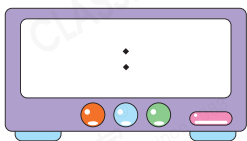
4.



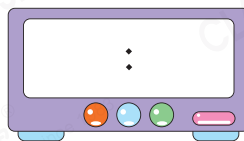


Write numbers on the digital clocks to match the time.

5. Eleven o-three



6. Eight thirty-four



Write answers on _____.

7.



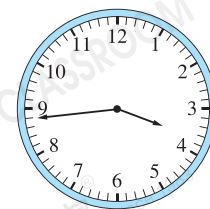
After 20 minutes



8.



After _____ minutes



9. Grace spent 45 minutes doing homework. Jenny spent 1 hour doing homework. ☆ Grace / Jenny (☆ circle the answer) spent more time on doing homework.

10. Dad left home at

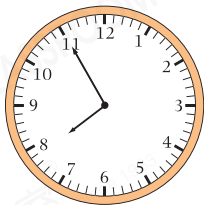


(a) Dad left home at _____ (time in words).

(b) Dad arrived office at 5 minutes past 8. He took _____ minutes travelling from home to office.

11. Iris drank a cup of milk between 8:00 and 8:55. What time it might have been?

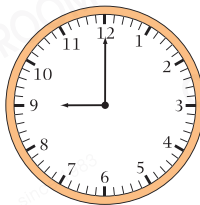
A.



B.



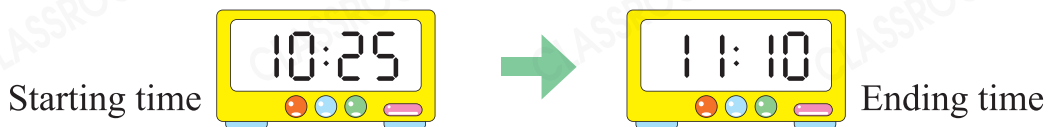
C.



D.



12. The clocks below show the starting and ending time of a calligraphy class.



(a) The time now is 10:08. It is _____ minutes before the calligraphy class.

(b) The calligraphy class ended at 11:15. That is _____ minutes later than planned.

Brain Quest



Detailed tips

The clock on the right shows the time now. After at least _____ minute(s), the angle between hour hand and minute hand will be a right angle.

