

# Analysis of Exam Questions

## • Number Strand

1. In the number 695, digit '6' stands for  $\star$  6 / 60 / 600 .  
( $\star$  Circle the answer)

### Scoring Key

- Find out which place '6' is in.

2. Three odd numbers are arranged from the smallest to the greatest as shown below:

201	,	?	,	319
(Smallest)				(Greatest)

### Scoring Key

- Pay attention to 'odd numbers'.
- Note that numbers are arranged from the smallest to the greatest.

The number in the box may be:

- A. 119       B. 210  
 C. 225       D. 320
3. There are half a dozen of eggs in each box.  
There are \_\_\_\_\_ eggs in 5 boxes in total.

### Scoring Key

- Find out the value 'half a dozen' stands for.

4.

Class	2A	2B	2C
Number of pupils	29	34	26

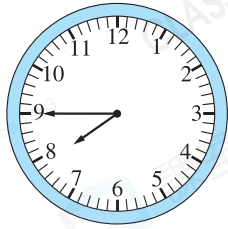
There are 85 seats in the study room. After the pupils of Class 2A and 2B take their seats, how many empty seats are left? (Show your working)

### Scoring Key

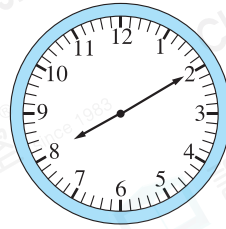
- Choose **useful data**.
- Answer need:
  - expression
  - answer and unit
  - explanation

## Measures Strand

5. The clocks below show the starting and ending time of morning news report.



Starting time



Ending time

- (a) Morning news report starts at \_\_\_\_\_ minutes to \_\_\_\_\_ in the \_\_\_\_\_.
- (b) The time now is 7 minutes to 8 in the morning. It is \_\_\_\_\_ minutes before the end of morning news report.

### Scoring Key

- ⊕ Calculate the time intervals in '7:53 to 8:00' and '8:00 to 8:10'.

6.

September						
Sunday	Monday	Tuesday	Wednesday	Thursday	Friday	Saturday
	1	2	3	4	5	6
7	8	9	10	11	12	13
14	15	16	17	18	19	20
21	22	23	24	25	26	27
28	29					

- (a) Gretta attends piano classes every Saturday. She attends \_\_\_\_\_ piano class(es) in September.
- (b) Piano contest starts on 29<sup>th</sup> September and it lasts for 4 days. Gretta is performing on the third day of the contest. She is performing on the \_\_\_\_\_ of \_\_\_\_\_ (Month).

### Scoring Key

- ⊕ Circle all dates of Saturdays on the calendar.

### Scoring Key

- ⊕ Find out the 'starting day'.
- ⊕ Pay attention to 'performing on the third day'.

## Shape and Space Strand

7. Arrange Angles  $x$ ,  $y$  and  $z$  in the figure below from the largest to the smallest.



Answer: \_\_\_\_\_, \_\_\_\_\_, \_\_\_\_\_  
(Largest) (Smallest)

### Scoring Key

- Focus on the angles to be compared.
- Arrange them as required.

8. Study the following figures. Write the letter(s) for the answer.



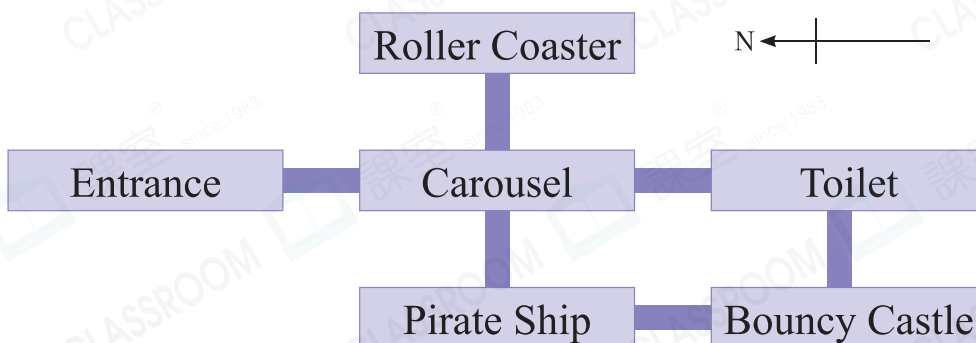
List the figure(s) formed by perpendicular lines.

Answer: \_\_\_\_\_

### Scoring Key

- List all the answers.
- Note that the figures may not be in regular orientation.

9. The floor plan of a Carnival park is shown below.



- (a) Sally goes east from Carousel to \_\_\_\_\_.
- (b) Ronald goes \_\_\_\_\_ from Toilet to Bouncy Castle. Then he turns \_\_\_\_\_ to reach Pirate Ship.

### Scoring Key

- Move(draw) the compass sign to the suitable position.