



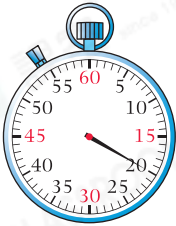
Date: \_\_\_\_\_

Mark: \_\_\_\_\_



Write down the time measured by each stopwatch.

1.



\_\_\_\_\_ seconds

2.



\_\_\_\_\_ seconds



Write down the time passed.

3.



Starting time



Finishing time

\_\_\_\_\_ seconds have passed.

4.



Starting time



Finishing time

\_\_\_\_\_ seconds have passed.



Fill in the blanks with the suitable units of time.

5. A Chinese class lasts about 35 \_\_\_\_\_.

6. It takes about 8 \_\_\_\_\_ for a lift to travel from 1<sup>st</sup> floor to 5<sup>th</sup> floor.

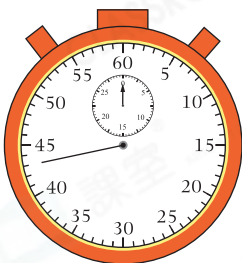
7. Candy takes about 20 \_\_\_\_\_ to put on a coat.

8. Mandy took half a minute to wash her hands. Sam took 40 seconds to wash his hands. ☆ Mandy / Sam took a longer time. (☆ Circle the answer)

9. At , Ms Lee started to reheat a sandwich. The reheat was

over at . She took \_\_\_\_\_ seconds to reheat the sandwich.

10.

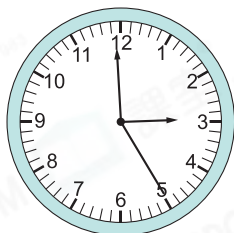


Cathy participated in a 200 m race. The stopwatch on the left shows the record of the champion. Cathy was 2 seconds slower than the champion. She used \_\_\_\_\_ seconds to complete the race.

**Scoring Key**

⊕ 'Slower' means more time is spent.

11.



Clock A



Clock B

Clock A and Clock B show the time Sam and Jimmy arrived at the observatory respectively. Sam arrived at the observatory \_\_\_\_\_ seconds

☆ earlier / later than Jimmy. (☆ Circle the answer)

12.

Participant	Charlie	Kelvin	Jerry
Time spent	53 seconds	1 minute	49 seconds

The above table shows the records of the participants taking the first three places in a dash event.

(a) The champion finished the race \_\_\_\_\_ seconds faster than the second runner-up.

(b) The dash event started at 2:15 in the afternoon. Kelvin finished the race at \_\_\_\_\_ : \_\_\_\_\_ ☆ a.m. / p.m. (☆ Circle the answer)