

# Test I

Date: \_\_\_\_\_  
 Mark: \_\_\_\_\_ /33  
 Time limit: 30 minutes

## Exercise 1 – 8

Strand	Assessment Focus	Question	Mark
Number	◆ 5-digit numbers ◆ Multiplication	1 – 12	/17
Measures	◆ Kilometre      ◆ Millimetre ◆ Time              ◆ Second	13 – 21	/16

**Self-grading**

25 – 33 marks 

17 – 24 marks 

0 – 16 marks 

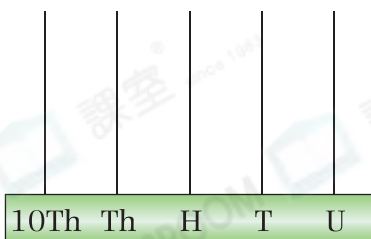
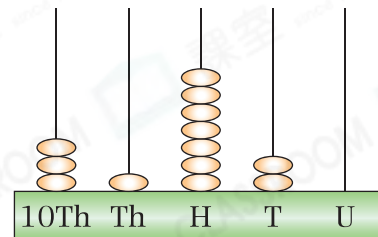
- In '45007', in which place is the digit '5'?
  - A. ten thousands place
  - B. thousands place
  - C. hundreds place
  - D. tens place
- The following table shows the prices of different accessories.

Accessory	Bracelet	Necklace	Ring
Price	\$12250	\$13050	\$12200

Arrange the prices of the accessories from the highest to the lowest.

Answer: \$ \_\_\_\_\_, \$ \_\_\_\_\_, \$ \_\_\_\_\_  
 (Highest) (Lowest)

- The abacus on the right shows a 5-digit number. What is the result when 410 is subtracted from this 5-digit number? Draw beads on the abacus below to show the result.



- Counting backwards from 10001, the fifth number is \_\_\_\_\_.

### Marking record



5. Write '31200' in words.

Answer: \_\_\_\_\_

6.  $18 \times 7 =$  \_\_\_\_\_

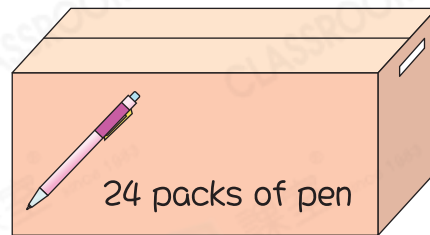
7.  $129 \times 6 =$  \_\_\_\_\_

8.  $25 \times 3 \times 8 =$  \_\_\_\_\_

9. Each pack contains 8 pens.

(a) To buy 5 boxes of pens is to buy  
\_\_\_\_\_ packs of pens.

(b) To sell 3 boxes of pens is to sell  
\_\_\_\_\_ pens.



10. Shirley enrolled a half year sketching course. The monthly tuition fee of the course is \$950. How much did she need to pay for the whole course? (Show your working)

\_\_\_\_\_

11. Kelly spends 11 dollars and 50 cents on travelling from and to school every day. She goes to school five days a week. How much is her weekly transportation expense?

Answer: \_\_\_\_\_ dollars and \_\_\_\_\_ cents

12. There are 5 shelves in a toy shop and each shelf has four tiers. 25 toy cars are displayed on each tier. How many toy cars are there on the shelves in total? (Show your working)

\_\_\_\_\_

Marking record



1 Mark



1 Mark



1 Mark



1 Mark



1 Mark



1 Mark



1 Mark



1 Mark



1 Mark



1 Mark



1 Mark



1 Mark



1 Mark



1 Mark

13. The following stopwatches show the time three students took to make a paper airplane.



Ada



Shery



Susan

Who took more than 30 seconds to make a paper airplane?

- A. Only Ada
- B. Only Ada and Shery
- C. Only Susan
- D. Only Shery and Susan

14. A advertisement starts at  and ends at .

This advertisement is \_\_\_\_\_ seconds long.

15. A veggie buffet promotion leaflet is shown on the right.

- (a) The veggie buffet is available for \_\_\_\_\_ hours.
- (b) Grandpa took the seat at 12:35 p.m. and checked out 45 minutes later. He checked out at \_\_\_\_\_ : \_\_\_\_\_ p.m.

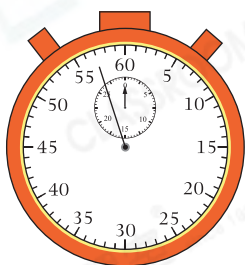
**45-minute Veggie Buffet**



\$88 each  
(same price for all ages)

Opening hours: 12:00 - 14:00

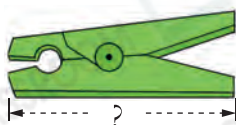
\*Time will be started counting at the appointed seated time.

16.



The stopwatch on the left shows the time Kenny took to swim 50 m. Charles took one minute to swim 50 m. Kenny was \_\_\_\_\_ seconds  faster / slower ( circle the answer) than Charles.

17.



Measure the above peg with a ruler. The length of the peg is \_\_\_\_\_ mm.

18. Fill in the following blanks with suitable units.

- (a) A castle has a height of about 20 \_\_\_\_\_.
- (b) The length of a chili pepper is about 40 \_\_\_\_\_.
- (c) A rollercoaster trail has a length of about 3 \_\_\_\_\_.
- (d) A Chinese chess piece is about 11 \_\_\_\_\_ thick.

19. Which of the following is the most suitable to be measured in 'millimetre'?

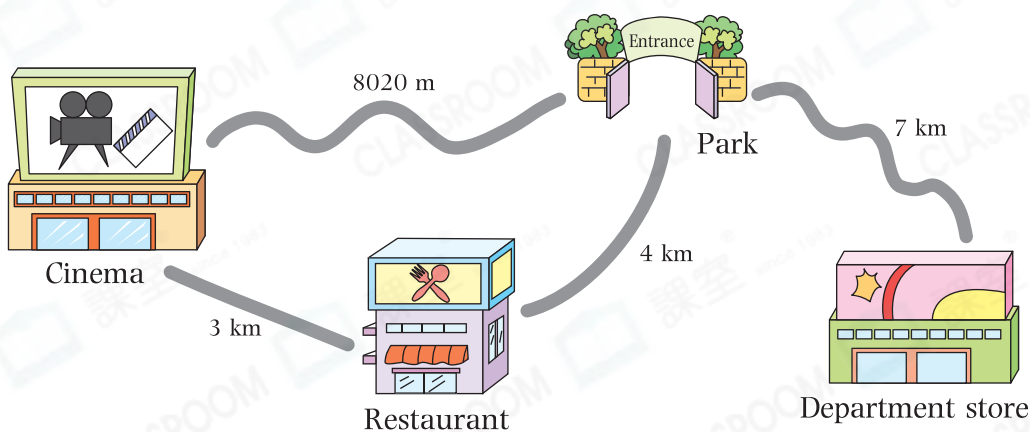
- A. Height of a cup
- B. Length of an rubber
- C. Length of a chopstick
- D. Thickness of a ruler

20. Measure the paper strip below.



The above paper strip is \_\_\_\_\_ mm long. The difference in length between this paper strip and another 15 cm paper strip is \_\_\_\_\_ mm.

21.



- (a) The route between the park and the ☆ cinema / restaurant / department store ( ☆ circle the answer) is the shortest.
- (b) From the park to the cinema through the restaurant, the route is \_\_\_\_\_ m long.
- (c) The shortest route from the cinema to the department store is \_\_\_\_\_ km long.



Check your work

- All questions finished
- Answers checked



1 Mark



1 Mark



1 Mark



1 Mark



1 Mark



1 Mark



1 Mark



1 Mark



1 Mark



1 Mark