

# Revision I

● Topics from 1A to 2B



Date: \_\_\_\_\_



Mark: \_\_\_\_\_ /20



Time limit: 20 minutes

Strand	Assessment Focus	Question	Mark
Number	◇ Addition                      ◇ Subtraction ◇ Mixed operations of addition and subtraction ◇ 4-digit numbers	1 – 5	/8
Measures	◇ Length                              ◇ Hong Kong money ◇ Time	6 – 8	/7
Shape and Space	◇ 3-D shapes                      ◇ 2-D shapes ◇ Angles	9 – 11	/5



## Self-grading

16 – 20 marks

11 – 15 marks

0 – 10 marks

## Marking record



1 Mark



1 Mark



1 Mark



1 Mark



1 Mark



1 Mark



1 Mark



1 Mark



1 Mark

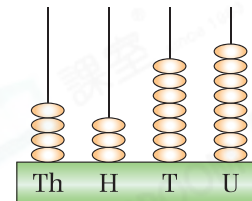
1.  $596 - 317 =$  \_\_\_\_\_

2.  $900 - 643 + 178 =$  \_\_\_\_\_

3.  $9 + 15 =$  \_\_\_\_\_  $+ 9$

4. (a) Write the number shown by the abacus on the right in numeral.

Answer: \_\_\_\_\_



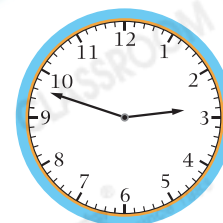
(b) In the number shown by the abacus, ' \_\_\_\_\_ ' is in the thousands place.

It stands for \_\_\_\_\_.

5. Mountain A is 552 m tall. Mountain B is 405 m taller than Mountain A. How tall is Mountain B? (Show your working)

6. The time shown on the clock on the right is

\_\_\_\_\_ : \_\_\_\_\_.



7. Fill in the blanks with suitable units of length.
- (a) A pedestrian tunnel is about 20 \_\_\_\_\_ long.
- (b) A pencil is around 15 \_\_\_\_\_ long.
- (c) A shoe is about 20 \_\_\_\_\_ long.
- (d) A double-decked bus is about 4 \_\_\_\_\_ tall.



1 Mark



1 Mark



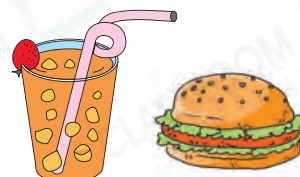
1 Mark



1 Mark

8. Sam bought a burger set.

- (a) The price of a burger set is \_\_\_\_\_ dollars and \_\_\_\_\_ cents.



\$48.50



1 Mark

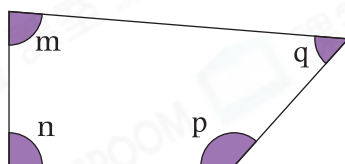
- (b) Sam paid by . Circle the change

he got.



1 Mark

9.



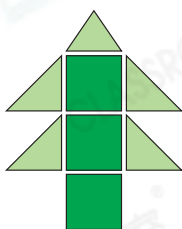
Which is the largest angle in the above figure?

- A. Angle m                       B. Angle n
- C. Angle p                         D. Angle q



1 Mark

10.



Which 2-D shapes form the Christmas tree on the left?

Answer: \_\_\_\_\_ and \_\_\_\_\_

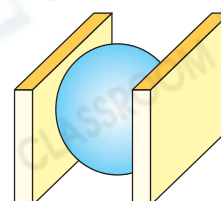


1 Mark



1 Mark

11. The 3-D shape on the right consists of one \_\_\_\_\_ and two \_\_\_\_\_.



1 Mark



1 Mark