




Exercise 1 – 16

Strand	Assessment Focus	Question	Mark
Number	<ul style="list-style-type: none"> <li>◇ 5-digit numbers</li> <li>◇ Multiplication</li> <li>◇ Division</li> </ul>	1 – 16(b)	/23
Measures	<ul style="list-style-type: none"> <li>◇ Kilometre</li> <li>◇ Time</li> <li>◇ 24-hour time</li> <li>◇ Millimetre</li> <li>◇ Weight</li> </ul>	16(c) – 24	/14
Shape and Space	<ul style="list-style-type: none"> <li>◇ Parallel lines</li> <li>◇ Parallelograms</li> <li>◇ Trapeziums</li> </ul>	25 – 30	/8

Self-grading

34 – 45 marks   
 23 – 33 marks   
 0 – 22 marks 

1. Write a 5-digit number according to the instructions on the right.

--	--	--	--	--

‘0’ is in the hundreds place.  
 ‘1’ is in the tens place.  
 ‘2’ is in the ten thousands place.  
 ‘5’ is in the units place.  
 ‘7’ is in the thousands place.

2. Write an odd number that is greater than 79985 and smaller than 80013.

Answer: \_\_\_\_\_

3. The raffle tickets were arranged in order. Some of them are then taken away. The following are the remaining raffle tickets.

Raffle ticket  
NO. 69501

Raffle ticket  
NO. 69502

Raffle ticket  
NO. 69505

Raffle ticket  
NO. 69507

At least \_\_\_\_\_ raffle tickets are taken away.

4.  $108 \times 6 =$  \_\_\_\_\_

5.  $125 \times 7 \times 4 =$  \_\_\_\_\_

6.  $95 \div 8 =$  \_\_\_\_\_

7.  $336 \div 3 \div 7 =$  \_\_\_\_\_

Marking record



1 Mark



1 Mark



1 Mark



1 Mark



1 Mark



1 Mark



1 Mark



1 Mark



1 Mark



1 Mark



1 Mark



1 Mark



1 Mark



1 Mark



1 Mark



1 Mark



1 Mark



1 Mark

8.  $713 \div 7 =$

- A. 11      ○ B. 11...6      ○ C. 101      ○ D. 101...6

9. There are 36 female employees in a company. The number of male employees is 3 times that of female employees. There are \_\_\_\_\_ male employees in the company.

10. Kelly works in a bookshop as a part-time promoter. Her daily salary is \$225.

(a) Kelly has a day off every week. What is her weekly salary?

(b) Kelly works for 5 hours a day. Her hourly wage is \$ \_\_\_\_\_.

11. There were 126 almond cookies in a bakery. After selling half of the almond cookies, the remaining almond cookies were packed into 3 boxes evenly. There are \_\_\_\_\_ almond cookies in each box.

12. There are red, green and blue balloons, 25 balloons of each colour in a bag. There are \_\_\_\_\_ balloons in 6 bags.

13.



Special price  
\$3

John has \$100. He can at most buy \_\_\_\_\_ cans of Coke and get \$ \_\_\_\_\_ of change.

14. In a souvenir shop, there are 551 shells. Each shell bracelet is made of 8 shells. 120 shells have been used to make bracelets. The number of shells left is \_\_\_\_\_. The shells left can be used to make at most \_\_\_\_\_ bracelets.

15. A rope is 8 m long. If the rope is cut into pieces of 9 cm long. How many pieces of 9 cm can be cut from the rope at most?



1 Mark



1 Mark



1 Mark

16.



## Painting Class

Date: Every Saturday in August    Class size: 9 people  
 Time: 9:30 a.m.-10:30 a.m.    Tuition fee: \$350

- (a) There are 320 people enrolled for the painting class. At least \_\_\_\_\_ classes are needed to hold all the people.
- (b) There are 5 Saturdays in August. Each lesson costs \$ \_\_\_\_\_.
- (c) Each lesson of the painting class lasts for \_\_\_\_\_ hour(s).



1 Mark

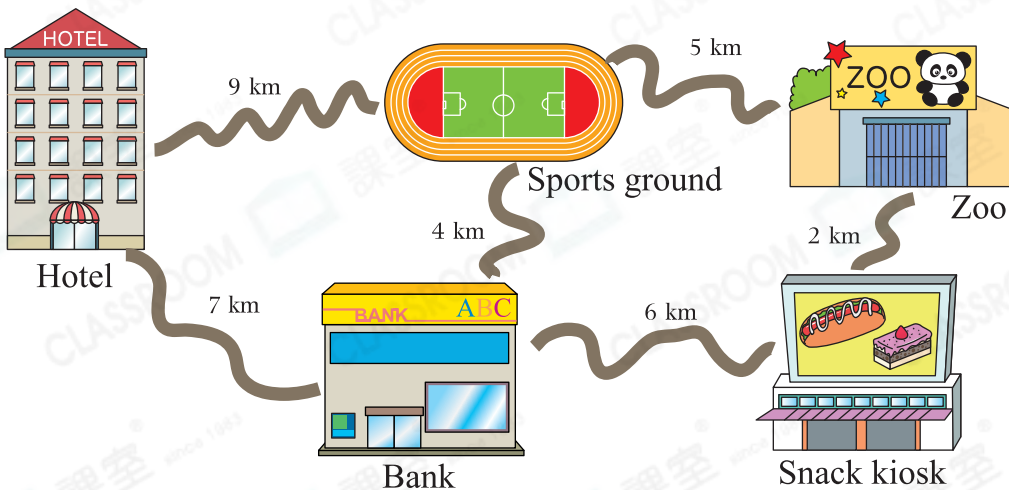


1 Mark



1 Mark

17. Look at the following map. Fill in the blanks.



- (a) From the bank to the zoo passing through the \_\_\_\_\_, we need to walk 8 km only.
- (b) The shortest route from the zoo to the hotel is \_\_\_\_\_ km long.




1 Mark



1 Mark

18. Ms Cheung bought a smartphone. Fill in the blanks with suitable units.



Smartphone specification

Thickness: 8 \_\_\_\_\_





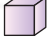



Weight: 160 \_\_\_\_\_

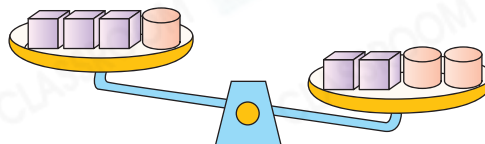
19. The length of the following bookmark is 60 mm. Measure its width with a ruler.



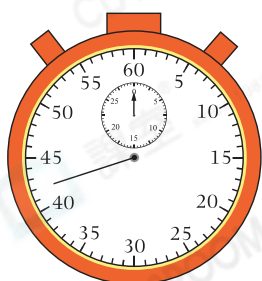
The width of the bookmark is \_\_\_\_\_ mm. The difference between the length and the width of the bookmark is \_\_\_\_\_ mm.

20. Look at the balance on the right. Which of the following is correct?

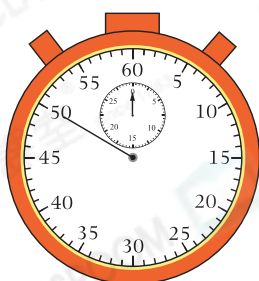
- A.  and  have the same weight.
- B.  is lighter than .
- C.  is heavier than .
- D. We cannot compare the weights of  and .



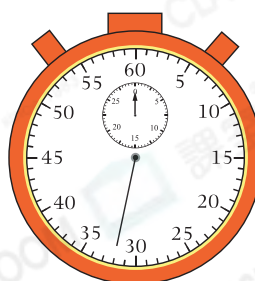
21. The stopwatches below show the time needed for three students to run a lap around the playground.





James



Sam



Ben

The fastest runner is  James / Sam / Ben ( circle the answer).  
He ran a lap in \_\_\_\_\_ seconds.



1 Mark



1 Mark



1 Mark



1 Mark

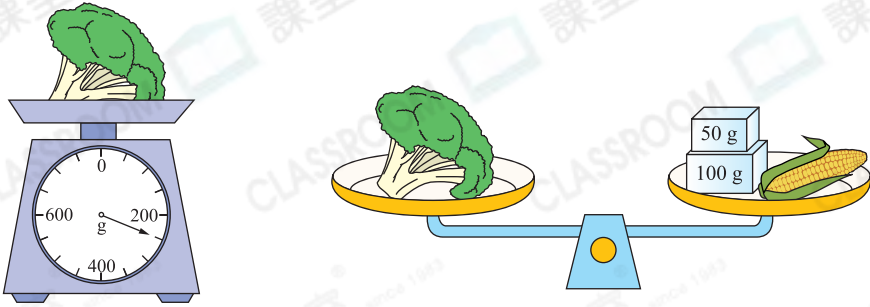


1 Mark







1 Mark

22.



(a)  weighs \_\_\_\_\_ . (Give your answer with a unit)

(b)  is \_\_\_\_\_ g  lighter / heavier than  .  
(  Circle the answer )



1 Mark



1 Mark

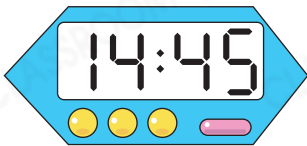


1 Mark

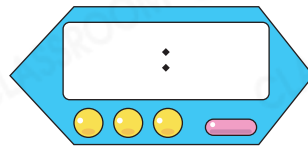
23. A cup stacking competition began at 16:00.  
Hailey had a glimpse of the clock and the time was as shown on the right. At that time the competition has begun for \_\_\_\_\_ s.



24. The school is running a rehearsal of the graduation ceremony today.  
The starting time and the finishing time of the rehearsal are shown below.



Starting time



Finishing time

(a) The rehearsal starts at \_\_\_\_\_ : \_\_\_\_\_ in the \_\_\_\_\_ .

(b) The rehearsal lasts for 50 minutes. Write the finishing time on the above clock in '24-hour time'.

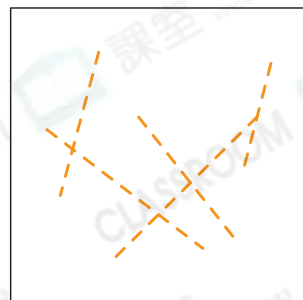


1 Mark



1 Mark

25. In the figure on the right, draw a pair of parallel lines along the dotted lines.

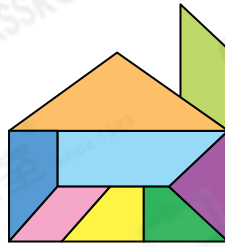


1 Mark



26. ☆ Rectangle / Square / Trapezium has/have all the properties of parallelogram. ( ☆ Circle the answer(s))

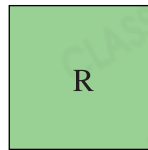
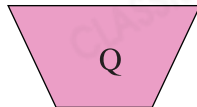
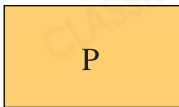
27.



Kelly makes a picture of house with some 2-D shapes. In the above figure,

- (a) there are \_\_\_\_\_ trapeziums.
- (b) There are \_\_\_\_\_ parallelograms.

28. Look at the figures below. Write the letters for the answer.

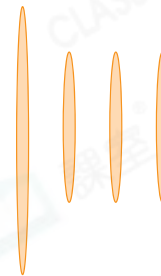


List the shapes with two pairs of parallel lines.

Answer: \_\_\_\_\_

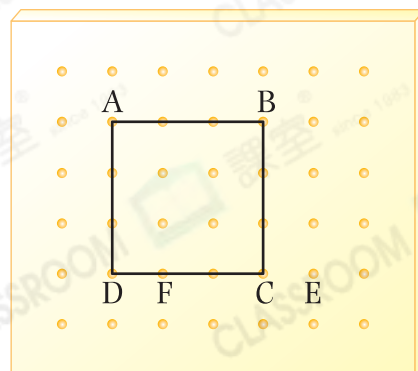
29. Using the sticks on the right, which quadrilateral can be formed?

- A. Square
- B. Rectangle
- C. Trapezium
- D. Parallelogram



30. Charmaine used a rubber band to make a shape by enclosing points A, B, C, and D.

- (a) She made a \_\_\_\_\_.
- (b) She then moved the rubber band from C to E, and from D to F. The shape becomes a \_\_\_\_\_.



Check your work

- All questions finished
- Answers checked