

Farewell to Carbon

REDUCING CARBON EMISSIONS: THE ¹WHYS AND THE HOWs

[1] Do you know that carbon dioxide makes up about ²80% of the greenhouse gases, the ³major cause of global warming? In recent decades, the total amount of greenhouse gases in the atmosphere has soared considerably due to human activities. If you doubt the extent to which mankind has a hand in it, see the table on the right. The factors leading to the problem are all human activities. The result of this? One of the biggest challenges the world has ever faced. To save it and all of its inhabitants, you need to play your part.

Let's Think!

1. What have you done to protect the environment?
2. How will you encourage your friends to protect the environment?

Why do we need to reduce the emission of carbon dioxide?

➤ Look at the ¹subheading and the paragraph's topic sentence.

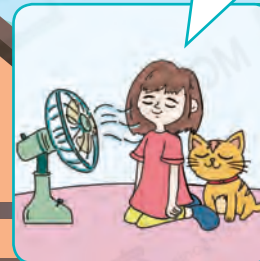
We need to reduce the emission of carbon dioxide because ²it is the largest component of greenhouse gases, which ³cause global warming.

WHERE WE ARE NOW, AND WHY

WHERE WE COULD BE, IF WE...

[4] Recycle plastic bottles, cans and used papers, while those with writing on only one side can be reused.


[5] Reduce the consumption of electricity by using a fan instead of an air conditioner to cool yourself, and by turning off electronic appliances that are not in use.



Looking into Grammar

The verb 'need' may be used before a noun to express the need for something or an infinitive verb to express the need to perform an action.

- ✓ Jane **needs paints** for the walls.
- ✓ Jane **needs to paint** (✗ **painting**) the walls.

 Circle THREE 'need', one followed by a noun and the other two followed by a *to*-infinitive, in the poster.

Factors contributing to carbon emissions in Hong Kong (2017)



65%
Electricity Generation



18%
Transport



7%
Waste



10%
Others



[2] Oh, I can't breathe! Why is it so hot here? I feel like I'm being grilled!



[3] It's because of the humans and their greenhouse gases! The world needs a break from all of what they are producing every day! Someone needs to do something about global warming and these gases!

STEAM

Australia is ravaged by ferocious and deadly bushfires every year. More and more people have, at last, faced up to the seriousness of climate change and responded to the appeal for a reduction in meat consumption to help reduce carbon emissions.

Below are the six least climate-friendly foods we can avoid:

					
Mutton	Beef	Cheese	Pork	Butter	Turkey
39.2	27.0	13.5	12.1	11.9	10.9

(the kilograms of carbon dioxide equivalent produced per kilogram of food)

More to Take Away

In August 2018, Greta Thunberg, a then 16-year-old Swedish student, started a strike outside the Swedish Parliament, calling for more drastic action against climate change. Since then, the strike has developed into a weekly movement known as 'Fridays For Future', and she has gained international recognition as an environmental activist for having started the movement and being its spiritual leader.

[6] Take public transport instead of driving. It can reduce the number of vehicles, hence reduced carbon emissions on the road.

[7] Avoid using disposable items like plastic straws. Replace ⁴them with reusable or recyclable ones.

Read paragraph 7. What does the word ⁴them refer to?

- There are two plural nouns in the first sentence. Which one fits the context better?

The word 'them' refers to disposable items. (It does not refer to only plastic straws because they are not the opposite of reusable or recyclable products in general.)

[8] Reuse things whenever possible, especially plastic bags and bottles.

~250 words

Part A Multiple Choice Questions

Answer the following questions based on the information provided in the poster. Choose the best answer by blackening the appropriate circle.


1. Global warming has worsened mostly because of _____.

- A. air pollutants
- B. chemicals
- C. greenhouse gases
- D. people living in skyscrapers

1 What contributes to global warming primarily?


2. In paragraph 1, 'makes up' can best be replaced by '_____'.

- A. forms
- B. comes from
- C. produces
- D. takes away

 3. Read the last sentence of paragraph 1. The word 'it' refers to _____.

- A. humankind
- B. the world
- C. the reader
- D. carbon dioxide

3 What kind of thing can be 'saved' and have inhabitants?

 4. Which of the following accounts for the highest proportion of the release of carbon dioxide?

- A. power generation
- B. all kinds of vehicles
- C. private cars
- D. household waste

5. Which of the following is NOT a way to reduce carbon emissions?



A.



B.



C.



D.

6. What is the main purpose of the poster?

- A. to reduce carbon emissions
- B. to raise money for environmental organisations
- C. to persuade people to lead a greener life
- D. to list the environmental impacts of climate change

Self-evaluation Checklist (✓/x)

1. I understood most of the information provided in the passage.	<input type="checkbox"/>
2. I guessed the meaning of unknown words or phrases correctly.	<input type="checkbox"/>
3. I managed to answer questions by drawing inferences.	<input type="checkbox"/>
4. I identified and understood the writer's / characters' feelings.	<input type="checkbox"/>
5. I could identify and summarise the main idea of the passage.	<input type="checkbox"/>
6. The two reading strategies taught in this module enabled me to read more effectively.	<input type="checkbox"/>

Part B Pre-HKDSE Questions

Answer the following questions based on the information provided in the poster. For question 1, answer in complete sentences.

1. Based on what is mentioned in the poster, suggest TWO ways to reduce carbon emissions at school.

- (i) _____
- (ii) _____



2. In paragraph 3, the word 'they' refers to _____.

2 Who are the birds blaming?



3. Which of the following activities are mentioned in the poster? Mark each picture with a tick (✓) in the box if it is mentioned and a cross (✗) if it is not.

(i)



(ii)



(iii)



(iv)



(v)



3 Look for verbs that refer to different types of environmentally-friendly activities and decide whether these pictures are associated with them.

4. Determine whether each of the following statements is true (T) or false (F). Write the correct symbols 'T' or 'F' in the spaces provided.

Statement	T/F
(i) Transport is Hong Kong's 2 nd greatest source of carbon emissions in 2017.	
(ii) There are only three sources of carbon emissions in Hong Kong.	
(iii) The writer thinks that reducing carbon emissions is not a task to be achieved by only a small group of people.	
(iv) Owners of private cars are advised to take public transport.	

DSE

Level Up



Q1 It takes two steps to answer this question:

- (a) First, identify the methods to reduce carbon emissions in the poster.
 (b) Second, think about how you may apply these methods at school.

Part C Vocabulary Bank

Label the photos in the mind map below with the names of environmentally-friendly items from the word box.

reusable container

recyclable utensils

electric vehicle

public transport

LED light bulb

organic food

energy-efficient air conditioner

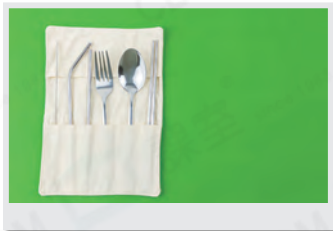
solar panel



1.



2.



3.



4.



5.

Daily necessities

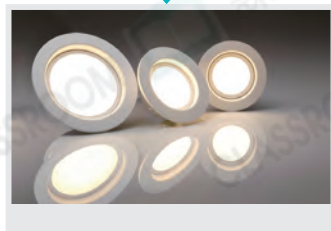
Transport

A low-carbon city

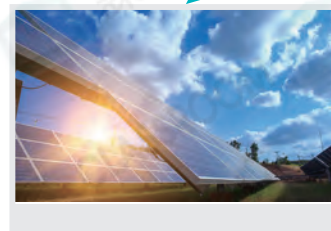
Appliances



6.



7.



8.

Part D Cloze Passage

Complete the speech below with the appropriate nouns introduced on the previous page.

Reminder



Pay attention to singular and plural forms.

Good morning principal, teachers and fellow schoolmates,

Have you ever heard of low-carbon footprints? A carbon footprint is officially defined as the total amount of carbon dioxide produced by a person's or a manufacturer's activities. Having participated in 'Green for Tomorrow', an inter-school project on climate change, I am now more convinced that going green is no longer an option but a social responsibility for each of us. And, today I'm here to share some of my insights into how everyone in society has a role to play in this battle against global warming and climate change.

Let's start with an easy one: support pesticide-free farms by only making purchases of (1) _____. Other than what we put into our mouths, what we choose to use also matters. Try to say no to bottled drinks. Live a greener life by preparing drinks in your own (2) _____. If you need to order takeaways, prepare yourself some (3) _____, like washable plastic cutlery, and say no to disposable ones.

I'm sure all of you must've heard, most probably from advertisements, of what I'm about to recommend, that is (4) _____. They are, compared to traditional bulbs, much more eco-friendly. It sounds clichéd, but many studies have proved that they are in fact at least 70% more efficient! Apart from lighting, air conditioning is almost an indivisible part of summer. If fans fail to serve you well and you need something better, remember to stick to (5) _____!

Last but not least, I'd like to say a few words about what the government may do. To reduce carbon dioxide emissions from cars, it may consider building more electric charging stations and bringing in more (6) _____. The public should also be encouraged to take (7) _____ whenever possible. To achieve sustainability in the long run, the use of renewable energy should be more widespread. An easy way to accomplish this would be to install as many (8) _____ as possible across the city.

I hope my words have inspired something in you. Going green is not only about yourself. It is about our world and every living creature in it. That's all I wanted to share today. Thank you!

Let's Discuss!



1. Do you support what Greta Thunberg has been advocating?
2. Which countries should have greater involvement in combating climate change?