

## 11

## Welcome to the chess world!

Level:  

## Let's think!

1. Do you like playing chess? Why or why not?
2. How can you learn to play chess?

PLAYLIST



READ ALONG



## Text 1

## THE QUEEN'S GAMBIT: MINISERIES

Genre: Drama, Mystery &amp; Thriller

## 'The Queen's Gambit' Review: One of the year's best shows

1 Did you know that chess games can be adjourned if they have run for too long? As each player's turn approaches, the next move is recorded and put into a sealed envelope, so that whenever both opponents sit down again, they can resume play as if the game had never been interrupted. This is one of the things I learnt from



*The Queen's Gambit*, an electrifying drama that was adapted from a novel of the same name. It presents chess games in an easy-to-understand manner.

2 The character Beth, portrayed by Anya Taylor-Joy, is a chess prodigy during the 1950s and 1960s. She took tranquilliser drugs during her time in an orphanage to treat her anxiety-related problems. In spite of this, she manages to become an accomplished chess player and compete in public tournaments, achieving notable success in a game that was then dominated by male players.



3 The series is one of the best TV shows I've watched. The realistic depiction of 1960s United States serves as a captivating backdrop for a compelling story and mesmerising acting performances. Scenes of the chess matches are intense, leaving viewers in suspense and holding their breath. You can't help but root for Beth and when she wins, you want to give her a fist pump.

~210 words

Read Text 1 and answer questions 1–7. For multiple-choice questions, choose the best answer and blacken ONE circle only.

1 Pay attention to the part of speech of the words.

(17 marks)

1. Look for words in paragraph 1 that mean the same as the following:

- (i) paused \_\_\_\_\_
- (ii) comes near \_\_\_\_\_
- (iii) competitors \_\_\_\_\_
- (iv) changed \_\_\_\_\_

2. Read paragraph 1. Determine whether the following statements are True (T), False (F), or Not Given (NG).

	T	F	NG
(i) Breaks can be taken when the game is taking too long.	<input type="radio"/>	<input type="radio"/>	<input type="radio"/>
(ii) The envelope remains open after the players' moves are placed in it.	<input type="radio"/>	<input type="radio"/>	<input type="radio"/>
(iii) The writer does not know how to play chess.	<input type="radio"/>	<input type="radio"/>	<input type="radio"/>
(iv) The plot of <i>The Queen's Gambit</i> is easy to follow even if you know little about chess.	<input type="radio"/>	<input type="radio"/>	<input type="radio"/>

3. Based on the information in paragraph 2, complete the details about *The Queen's Gambit*.

Who plays the character Beth?	(i)
In what time period does Beth's story take place?	(ii)
Why was Beth taking tranquilliser drugs?	(iii)

4. What was so remarkable about Beth's success?

\_\_\_\_\_

5. Based on the information in paragraph 3, complete the description by writing ONE word to fill in each blank. Note that the suitable word may not appear in the text. Make sure your answers are grammatically correct.

The chess (i) \_\_\_\_\_ are exciting to watch. They make you feel (ii) \_\_\_\_\_ and captivated at the same time, as you quietly (iii) \_\_\_\_\_ that Beth would win.

6. The writer wants to give Beth 'a first pump' (line 21) because he or she wants to \_\_\_\_\_.

- A. comfort her
  - B. cheer her on
  - C. congratulate her
  - D. scold her
- A   B   C   D



7. What is the tone of the TV review?

- A. bitter
  - B. reflective
  - C. pessimistic
  - D. admiring
- A   B   C   D

**Pre-DSE Level Up**

**Q7:** To determine the tone of a text, consider the word choice, tone indicators and tone shifts. Look for positive or negative adjectives that indicate the writer's feelings. Pay attention to adverbs that describe attitude, opinion or emotions. Mood and intention can change throughout the text.

Text 2

# World Chess Championship



- 1** The World Chess Championships have been held in the United States since 1886, in which the world's best chess players gathered to compete for a chance to play for the world champion title. At first, the champions were allowed to pick their opponents. However, by 1948, the International Chess Federation replaced this system with the Candidates Tournament, in which eight challengers were selected. 5
- 2** Over the years, the World Chess Championship has undergone various format changes. Currently, the championship is held biennially, with the current champion facing a challenger selected through the Candidates Tournament.
- 3** The championship plays an important role in promoting the game to a wider audience. It provides a platform for players to exchange ideas and strategies. In addition, the tournaments often give rise to new initiatives that contribute to the continuing development of the game. 10
- 4** In 2023, Ding Liren made history by becoming the first world champion from China. His victory not only demonstrates his exceptional skills and talent, but also highlights the growing prominence of Chinese players to international audiences. Ding's impressive achievement serves as an inspiration to other aspiring Chinese players. 15
- 5** The World Chess Championship continues to draw the attention of chess enthusiasts and players alike. As the championship evolves and adapts to changing times, it will undoubtedly remain a significant event in the world of chess. 20
- ~220 words

## Looking into Grammar

We use **defining relative clauses** to give necessary information about the people or things in the subject or object.

✓ ... *The Queen's Gambit*, an electrifying drama **that was adapted from a novel of the same name**.

We use **non-defining relative clauses** to give additional information about people or things.


✓ *The World Chess Championships have been held in the United States since 1886, **in which the world's best chess players gathered to compete for a chance to ...***

? Underline TWO more relative clauses in Text 2.


**Read Text 2 and answer questions 8–13. For multiple-choice questions, choose the best answer and blacken ONE circle only. (10 marks)**

8. Read paragraphs 1–2. Which of the following is NOT true about the championship?
- A. The challenger has won in the Candidates Tournament.  
 B. The championship is held every four years.  
 C. The Candidates Tournament starts with eight players.  
 D. Players were able to choose their opponents before 1948.
- A    B    C    D
9. Based on the information in paragraphs 1–2, complete the summary below by writing ONE word to fill in each blank. Make sure your answers are grammatically correct.


In 1886, the first World Chess Championship was (i) \_\_\_\_\_ in the US. In the beginning, the (ii) \_\_\_\_\_ could decide who they (iii) \_\_\_\_\_ against. Now, organisers use a tournament to (iv) \_\_\_\_\_ the player.

-  10. According to paragraph 3, how does the championship benefit the international chess community?
- (i) \_\_\_\_\_  
 (ii) \_\_\_\_\_

11. Find a word in paragraph 4 which means 'excellent'.
- \_\_\_\_\_

-  12. According to paragraph 4, what is the significance of Ding Liren becoming the world champion? Tick (✓) the appropriate box(es). You may tick (✓) more than one box.

- It proves that Chinese players can play equally well as players from other countries.
- It helps to promote chess to children in China.
- It makes foreigners pay more attention to Chinese players.
- It encourages Chinese players to aim high.

-  13. What is the tone of this article?

- A. humorous  
 B. doubtful  
 C. informative  
 D. critical

A    B    C    D  
        



# Vocabulary

## GLOSSARY



A. Complete the blog entry below with the given words. Make sure your answers are grammatically correct.

**Adjective:** aspiring    electrifying    exceptional

**Noun:** challenger    enthusiast    prodigy    strategy

**Verb:** adjourn    dominate    **Phrasal verb:** root for



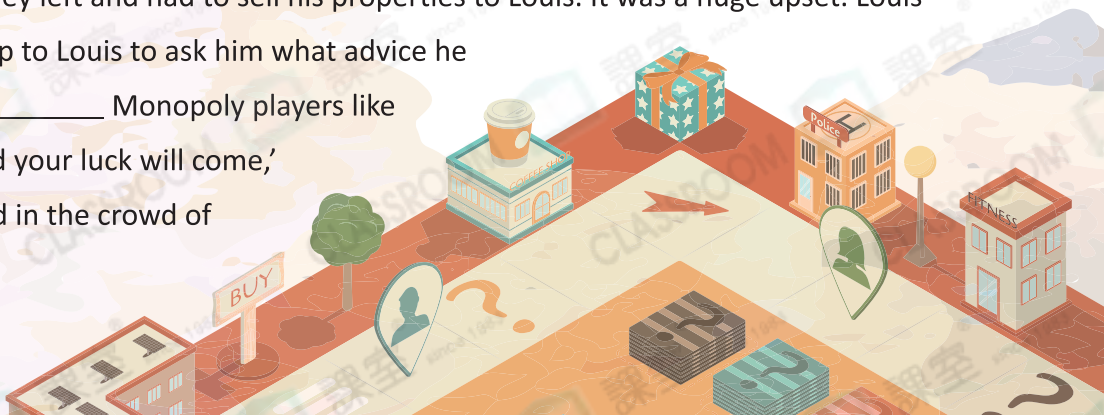
## A thrilling experience at the Monopoly World Championship



I've been a Monopoly (1) \_\_\_\_\_ ever since I started playing it at six. That's why I was thrilled when my dad told me he would take me to watch the Monopoly World Championship in Macao. The game that we watched was the final game. It was played by four people, and they all showed (2) \_\_\_\_\_ skills. None of us in the audience could guess who would win, which made the atmosphere very (3) \_\_\_\_\_ and tense. I (4) \_\_\_\_\_ David Tam, last year's champion, because I wanted him to win the title again. He was facing fierce competition though. One of the (5) \_\_\_\_\_, Louis Webb, has been known as a / an (6) \_\_\_\_\_. Louis had already won quite a few Monopoly competitions in the US, and many people thought that he would take the champion title from David.

At that moment, however, David still owned most of the land on the game board, except the MTR stations. He had built hotels on over half of his land. This (7) \_\_\_\_\_ was clearly working, as the other players all had to pay him sky-high rent. David was definitely (8) \_\_\_\_\_ the game, and soon only him and Louis remained. The host then decided to (9) \_\_\_\_\_ the game so they could rest for a bit.

When the game was restarted, things changed completely for David. He kept landing on Louis's MTR stations. Soon, he had no money left and had to sell his properties to Louis. It was a huge upset. Louis won! After the game, I went up to Louis to ask him what advice he could give to (10) \_\_\_\_\_ Monopoly players like myself. 'Believe in yourself and your luck will come,' he said, before he disappeared in the crowd of reporters around him.



B. You are taking chess lessons. Take notes on what the teacher says using the given phrases.

### Playing chess properly

adapt to changing situations

give up a piece to protect another

learn from my mistakes

move my pieces to the centre

plan my moves

protect my pieces

respect my opponent

watch my opponent's moves

1. _____	← Show good manners during the game.
2. _____	← Think ahead and consider your actions.
3. _____	← Prevent your pieces from getting captured.
4. _____	← Bring your pieces out so they can attack first.
5. _____	← Think about which piece is more important.
6. _____	← Think about what your opponent is planning to do.
7. _____	← Adjust your strategy as you play.
8. _____	← Reflect on past games to improve your skills.



## Writing

### Popular board games

Do you play board games? Have you furthermore heard of any other global board game championships? Write an article in about 180 words.