

16

Animals can feel, too



Level: 1



Let's think!

1. Do you think that pets experience feelings like happiness, fear, or excitement? Why or why not?
2. Have you ever noticed any funny or unusual behaviours from them?

PLAYLIST



READ ALONG



Discovering other Sentient Beings

1 Throughout history, humans have held the belief that their capabilities to think and feel emotions set them apart from other creatures. However, as we continue to explore the animal kingdom, we are uncovering their striking capacity for experiencing emotions such as grief and empathy. Read on and learn about how the following animals can feel emotions. 5



2 In a heartwarming incident at Mumbai's zoo, a pair of doting penguin parents were observed to be audibly mourning the loss of their chick. The mother penguin was so distressed that it was pacing around the nest, while the father huddled over the lifeless chick, seeking to provide it with warmth and protection. Even days after the chick's departure, the mother carried around a pebble and sat on it, acting like it was still taking care of the baby. From this incident, scientists were surprised that animals, like humans, can experience grief and sadness when they lose their loved ones. The penguins' behaviour clearly indicates their emotional state, dispelling the belief that only humans possess this capacity. 10 15

3 Displays of love and affection have been discovered in animals as well. Mama, a 59-year-old chimpanzee, gained viral attention when she embraced her old friend Jan van Hooff, a renowned biologist. 20



Although the elderly Mama was unresponsive to most human visitors, its face lit up at the sight of the scientist. It was so delighted that it reached out to hug him, grinned widely and gently patted his head. Other chimpanzees have been seen to embrace their crying babies to comfort them, which is another sign that they can show affection.

25

4 Research has shown that animals can feel emotions when they perceive that they are treated unfairly. In an experiment, two monkeys were placed next to each other and were given rewards after completing a task. Both monkeys were happy when they received the same reward, a grape. However, when one monkey received a grape while the other received a cucumber, the monkey with the cucumber became so upset that it displayed signs of anger and even threw its cucumber slices in protest. This behaviour indicates that animals understand the concept of fairness and emotionally respond to inequality, just like humans.

30

35



40

5 It is undeniable that emotions play a significant role in the lives of animals, helping them to survive. Emotions serve as instincts that are the collective wisdom of their ancestors, guiding them to deal with different situations at various stages of life. For us humans and other animals alike, emotions are a fundamental part of our existence, whispering advice into our ears. As we conduct more research, we find more and more similarities between animals and humans. Grief, love, affection and a sense of fairness are not exclusive to our species.

45

~450 words

Looking into Grammar

We can use an adjective or an adverb with **so ... that ...** to talk about the effects caused by emotions.

✓ *The mother penguin was **so distressed that it was pacing around the nest ...***

? Underline TWO similarly structured sentences in paragraphs 3–4.

Read the text and answer questions 1–13. For multiple-choice questions, choose the best answers and blacken ONE circle only. (27 marks)


1. According to paragraph 1, which of the following is TRUE?

- A. Animals lack emotions.
- B. Humans are mentally superior to animals.
- C. Animals can feel emotions just like humans do.
- D. Animals have a limited ability to experience emotions.

A B C D

2. Find TWO examples of emotions in paragraph 1.


3. What does 'departure' (line 12) refer to? _____

 4. What did the mother penguin think the 'pebble' (line 12) was?

5. What is the main idea of paragraph 2?


- A. Penguins can feel sadness.
- B. Penguins care for their chicks.
- C. Humans doubted that penguins could display emotional responses.
- D. Penguins showed that animals can feel emotions like humans.

A B C D

 6. Complete the sentences by filling in each blank with ONE word taken from paragraph 3.

Mama's reaction when it saw the scientist indicates that it was genuinely (i) _____ to see him. In contrast, it did not display any signs of (ii) _____ when other people visited it.

7. Read paragraph 4. What 'rewards' (line 33) did the monkeys receive in the first stage of the experiment?

 8. Based on the information in paragraph 4, complete the following sentence with a phrase.

The monkey threw the cucumber slices because it thought cucumbers were _____

8 Did the monkey like the different reward?

9. What is the purpose of paragraph 4?

- A. to highlight the similarities between monkeys and humans
- B. to prove that unfair treatment can make monkeys aggressive
- C. to explain how monkeys are different from humans
- D. to describe a scientific experiment

A B C D

10. Complete the table based on the information in paragraphs 2–4.

Animal species	Behaviour	Reasons	Emotions observed in animals
Penguins	<ul style="list-style-type: none"> mourning loudly circling around a / an (i) _____ sitting on a / an (ii) _____ 	(iii) _____ their chick	<input type="radio"/> affection <input type="radio"/> sadness <input type="radio"/> relaxation
	<ul style="list-style-type: none"> huddling over the chick 	<ul style="list-style-type: none"> trying to keep it (iv) _____ and to (v) _____ it 	<input type="radio"/> affection <input type="radio"/> anxiety <input type="radio"/> excitement
Chimpanzees	<ul style="list-style-type: none"> hugging and patting the biologist (vi) _____ 	<ul style="list-style-type: none"> seeing someone it had a (vii) _____ bond with 	<input type="radio"/> fear <input type="radio"/> happiness <input type="radio"/> frustration
Monkeys	<ul style="list-style-type: none"> throwing objects 	<ul style="list-style-type: none"> (viii) _____ against unfair treatment 	<input type="radio"/> anger <input type="radio"/> grief <input type="radio"/> hatred

11. According to paragraph 4, is each of the following statements a fact (F) or an opinion (O)? Blacken ONE circle only.

	F	O
(i) Monkeys could feel unhappy when they are being treated unfairly.	<input type="radio"/>	<input type="radio"/>
(ii) It is remarkable that monkeys have emotions.	<input type="radio"/>	<input type="radio"/>
(iii) The experiment with monkeys is problematic.	<input type="radio"/>	<input type="radio"/>

12. Complete the sentence by filling in the blank with ONE word taken from paragraph 5.

The writer suggests that emotions are the _____ of those who lived before us.

13. Look for a literary device that conveys how emotions can guide our actions and decisions.

13 This phrase describes an action.

Vocabulary

GLOSSARY



A. Complete the article below with the given words. Make sure your answers are grammatically correct.

Adjective: distressed heartwarming unresponsive

Noun: affection capacity empathy grief instinct

Verb: grin mourn

Primates' capacity for feelings and empathy

For centuries, we humans believed that we were the only animals to have developed the (1) _____ to feel emotions like happiness and sadness. Research from scientists such as Jane Goodall, however, has proved that primates such as monkeys, chimpanzees and gorillas are able to feel as well.

Jane Goodall has studied chimpanzees in Africa since the 1960s. During her research, she saw that chimpanzees can show (2) _____ towards each other through hugs, kisses and touch. Seeing a group of chimpanzees displaying their love must be a / an (3) _____ moment for Jane!

Koko the gorilla, on the other hand, was seen to be (4) _____ the death of its pet cat. One morning, when Koko learnt that the kitten was lying motionless on the ground and was (5) _____ to her calls, she became (6) _____. Researchers then tried to find out what happened, and Koko used sign language to tell them that it was feeling sad. This showed that Koko could feel (7) _____.

Additionally, chimpanzees have the natural (8) _____ to care about others of their own species. In an experiment, two chimpanzees were put together and were given both red and green plastic chips. When a chimpanzee gave scientists a red chip, only that chimpanzee received a reward. However, when a green chip was given, both animals were rewarded. Over time, scientists saw that the chimpanzees gave more green chips than red ones. Therefore, the scientists believed that each ape did not want the other one to be left out, indicating that they could feel (9) _____.

Many people think that chimpanzees (10) _____ when they are happy. but it is not true. Research has shown that they do not smile to express joy.



B. Look at the pictures. Complete the sentences with the given words and phrases.

Interesting animal behaviour

flutter their wings

huff and puff

leap into the air

moo

nuzzle

purr

sing elaborate songs

wag their tails

1. **Dogs** _____
_____ when they are
happy.



2. Some **birds** _____
_____ to
attract mates.



3. **Cats** may _____
_____ when they
feel content.



4. When **seals** are
threatened, they
_____ to
blow up their chests
to scare others away.



5. **Horses** rub their noses
or _____
on another horse to
show love.



6. **Cows** _____
_____ to communicate
with other cows.

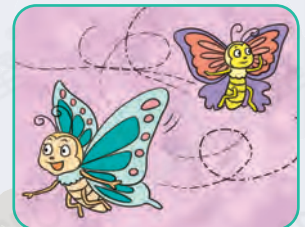


7. Some scientists
think that **dolphins**

as a form of play.



8. **Butterflies** _____
_____ to make
their movements
unpredictable to
predators.



Writing

Promoting animal welfare

Write an article of about 180 words about why we should show empathy towards animals and elaborate with reasoning.