

# The use of AI: a blessing or a curse

DSE

Level: 



## Let's think!

1. What artificial intelligence apps do you use?
2. How much do you rely on the apps?

PLAYLIST



READ ALONG



## A closer look at the ethical challenges as AI blooms

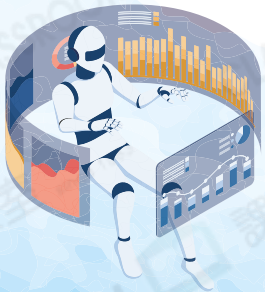
- 1 Have you ever wondered how face recognition on your phone works? Every time we go to our social media newsfeed or do a voice search or image search, artificial intelligence (AI) is lurking in the background. AI technology is seen as the pillar of computer learning. Thanks to AI, we have 'smart' gadgets. By taking different sets of data as the input, our gadgets can process languages, solve problems and learn in the same way as we do. 5
- 2 Today, AI is widely used in our everyday life. It makes our life easier and more pleasurable. For example, if you have ever streamed a film on Netflix, you may have noticed that you would receive other film recommendations based on what you have watched already. AI analyses your favourite genres and helps you hunt for shows to enjoy with its recommendation list. When AI and humans interact, there goes 'hybrid intelligence', which brings convenience and improves efficiency. 10
- 3 Despite its benefits to us, there are debates over the potential bias built into AI systems. We interact with AI every time we shop online, update social media feeds and talk to troubleshooting chatbots. The digital footprints we leave behind are analysed by AI to improve our online experience as a user. AI is everywhere, but there is almost no government control to ensure equal opportunities. This makes AI a double-edged tool. 15

### Ethical concerns

- 4 The wide use of AI has raised ethical concerns in society. They are privacy, bias, and safety issues. When we post a photo on Instagram, we may have unknowingly or unwillingly revealed our personal data like age, location and preferences. 20



The data is collected not only to train AI but also to improve our online experience. It could even be sold without our knowledge or consent. How can users' privacy be ensured then?





5 Panic over AI introducing bias into everyday life has been commonplace. AI-powered procedures decide what information we receive. Through this, it changes our habits and reshapes our perception. It robs us of the right to make our own decisions, from entertainment to healthcare and education. Without the safeguards against bias in AI, how could the system ensure that users get the best opportunities?

25

6 We have not solved the hardest questions yet: What are the risks of using AI? And can the role of humans be replaced? Freeing humans from more important decisions, AI analytics can be a hazard if humans rely too heavily on it. Some experts believe that AI is capable of preventing human errors. In fact, AI not only repeats human fallacies and errors but also adds a kind of scientific reputation to the judgements. The seemingly objective judgements might be unreliable. A few years ago, a self-driving car hit and killed a pedestrian. The driver was held responsible for the death. When AI systems fail, humans have to analyse what goes wrong and resolve the problems.

30

35

### Parties must take responsibilities

7 Although AI is used in many aspects of our life, there are not enough regulations in place to ensure its fair use. Many companies develop their own AI systems to collect market information. The government needs to regulate these companies, as they probably will not take the initiative to sort things out.

40

8 While companies should refrain from using AI systems for surveillance or manipulating consumers' behaviour, we users need to learn about AI and its social and ethical impact—to decide what role we want AI and social media to play in our lives. Understanding AI is the key to imagining and developing the future of technology. As AI will be even more prominent in the future, students should be taught how it works. In this way, AI technology can be used sensibly and fairly.

45



~650 words

### Looking into Grammar

We use **not only ... but also ...** to link up two phrases.

✗ The data is collected **not only to train AI but also our online experience.**

✓ The data is collected **not only to train AI but also to improve our online experience.**  
(linking two infinitive phrases)

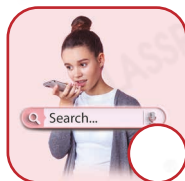
? Underline the similarly structured sentence in paragraph 6 of the feature article.

Read the text and answer questions 1–14. For multiple-choice questions, choose the best answer and blacken ONE circle only. (29 marks)

- In paragraph 1, what metaphor is used to describe AI?
- Complete this sentence based on the information in paragraph 2. 'Hybrid intelligence' exists when there is \_\_\_\_\_.

2 Give the answer using the correct part of speech of the key word.

- Mark each AI application with a tick (✓) if it is mentioned in paragraphs 1–2.



- Complete the summary by using a maximum of TWO words based on paragraph 3. Make sure your answers are grammatically correct.

Many companies use AI to (i) \_\_\_\_\_ the (ii) \_\_\_\_\_ of service users. They do so by (iii) \_\_\_\_\_ their (iv) \_\_\_\_\_.

- Read paragraphs 2–3. Why does the writer think that AI is 'a double-edged tool' (line 16)?

\_\_\_\_\_

\_\_\_\_\_

5 Double-edged means having both positive and negative effects.

- What is the cause of the 'Panic' (line 25)?

People's world view is affected since AI \_\_\_\_\_.

- What does the writer imply by saying that AI seems to give 'objective judgements' (line 34)?

7 What does 'seemingly' (line 34) mean?

The writer doubts that AI is as \_\_\_\_\_

\_\_\_\_\_.

- Complete the table by filling in each blank with ONE word taken from paragraphs 4–6.

Ethical concern	Example
(i) _____	AI collects or sells users' personal data without their (ii) _____.
(iii) _____	AI (iv) _____ users' habits by making (v) _____ for them about what opportunities to get.
Safety issues	AI in a self-driving car failed to analyse and prevent human (vi) _____, and thus hit and killed a pedestrian.

9. What does 'sort things out' (line 41) mean?

- A. to collect users' information efficiently  
 B. to instruct users on how to use AI  
 C. to deal with the concern over fairness in using AI  
 D. to set standards for all AI companies

A      B      C      D  
        

10. According to paragraph 8, why should AI be taught in schools?

---



---



11. According to paragraphs 7–8, what responsibilities must the parties take?

- (i) The government must \_\_\_\_\_  
 \_\_\_\_\_  
 \_\_\_\_\_
- (ii) Users of AI must \_\_\_\_\_  
 \_\_\_\_\_  
 \_\_\_\_\_

12. Determine whether each of the following statements about AI is a fact, an opinion or not given.

AI ...	Fact	Opinion	Not Given
(i) is a very important part of smart technology.	<input type="radio"/>	<input type="radio"/>	<input type="radio"/>
(ii) is used in entertainment, healthcare and education.	<input type="radio"/>	<input type="radio"/>	<input type="radio"/>
(iii) will probably replace humans in the future.	<input type="radio"/>	<input type="radio"/>	<input type="radio"/>
(iv) produces errors when not enough data is collected.	<input type="radio"/>	<input type="radio"/>	<input type="radio"/>
(v) does not always work properly.	<input type="radio"/>	<input type="radio"/>	<input type="radio"/>

13. Look for words or phrases in the text to match the following definitions.

- (i) \_\_\_\_\_ (para. 5) (*adj.*) often experienced, and therefore not unusual  
 (ii) \_\_\_\_\_ (para. 6) (*n.*) something that is dangerous  
 (iii) \_\_\_\_\_ (para. 7) (*phr.*) existing and ready to be used



14. What is the writer's main purpose of writing this feature article?

- A. to present his viewpoint on the use of AI  
 B. to advise schools to educate students about AI  
 C. to criticise the government for not regulating the use of AI  
 D. to complain about AI's ambition to replace the role of humans

A      B      C      D

# Vocabulary

## GLOSSARY



A. Complete the article below with the given words. Make sure your answers are grammatically correct.

commonplace (*adj.*)

digital footprint (*n.*)

double-edged (*adj.*)

lurk (*v.*)

pillar (*n.*)

prominent (*adj.*)

reputation (*n.*)

resolve (*v.*)

safeguard (*n.*)

unknowingly (*adv.*)

## How can big data change our lives?

Big data plays a / an (1) \_\_\_\_\_ role in contemporary society. With big data, we can figure out some useful patterns from the sea of information on the internet.

The technology has become a / an (2) \_\_\_\_\_ of the development of society. In fact, we are already using big data in many aspects (3) \_\_\_\_\_. For example, thanks to big data, we can check traffic conditions in real time. It has also been (4) \_\_\_\_\_ in police affairs. With the help of big data, police can track suspects' (5) \_\_\_\_\_, and thus effectively solve the cases.



However, the technology causes (6) \_\_\_\_\_ effects. There are always hackers (7) \_\_\_\_\_ on the internet. When they steal and use the information, it will very likely do damage to the (8) \_\_\_\_\_ of an individual or a company. To prevent this from happening, we should install anti-virus software as a / an (9) \_\_\_\_\_.

Big data will become more prevalent in the future. When information processing is made easier, we can (10) \_\_\_\_\_ different kinds of problems more effortlessly.

B. Look at the pictures. Write the correct words in the spaces provided.

**Applications of artificial intelligence**

autonomous vehicles

bomb disposal

facial recognition

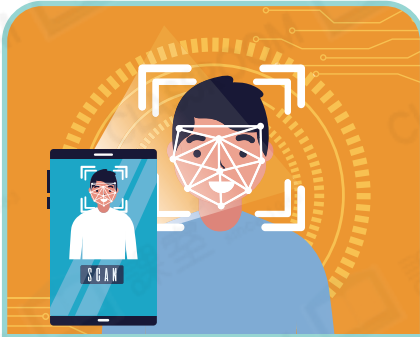
smart smoke detection

spam filtering

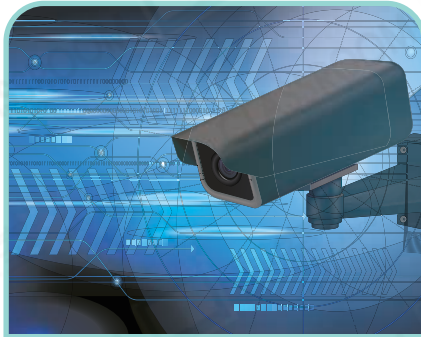
speech recognition

surveillance

telecoms



1. \_\_\_\_\_



2. \_\_\_\_\_



3. \_\_\_\_\_



4. \_\_\_\_\_



5. \_\_\_\_\_



6. \_\_\_\_\_



7. \_\_\_\_\_



8. \_\_\_\_\_

**Writing**

Is artificial intelligence a good thing or a bad thing?

Write an article about the pros and cons of artificial intelligence in about 200 words.